

papilio®



must
have

2013-2014

LIFESTYLES 2013-2014



OUR MISSION

Supplying to the trade, innovative and trendy decorative rugs and concepts.

OUR SPECIALTY

Our dedicated design team located in Belgium creates collections and concepts, supported by textile technicians mastering the arts of rugmaking.

These innovative products are then produced in countries around the globe depending on where we find the expertise matching our standards.

YOUR CHOICE

We offer our customers a choice of:

A trendy collection serviced from our warehouses in Belgium, with low minimum ordersize.

A wider collection to choose from, developed and sourced to your needs in surprising low MOQ (marked in our catalogue as "upon request").

Rugs and concepts to cater for your brand or your specific requirements.

NOTRE MISSION

Fournir le secteur de déco intérieur avec des tapis et concepts contemporains, décoratifs et innovants.

NOTRE SPÉCIALITÉ

Notre équipe créative et spécialisée développe en Belgique les collections et concepts, avec le support des techniciens textile maîtrisant tout les aspects de production de tapis.

Une production suivie dans de différents pays ce qui nous permet de chercher et trouver l'expertise qui satisfait à nos normes et conditions.

VOTRE CHOIX

Nous offrons à nos clients:

Une collection contemporaine livrable de notre dépôt en Belgique, avec des petites quantités minimales à commander.

Une vaste collection, développée selon vos besoins, avec des quantités de commande réduites.

Des tapis et des concepts, complètement construits et adaptés à vos désirs et aspirations.

NUESTRA MISIÓN

Suministrar al comercio, tapices y conceptos decorativos, innovadores y de moda.

NUESTRA ESPECIALIDAD

Nuestro diligente equipo de diseño establecido en Bélgica, se encarga de la creación de colecciones y conceptos, asesorado por técnicos textiles que dominan el arte de la confección de tapices.

Los tapices son fabricados en diversos países del mundo, dependiendo donde encontremos la experiencia que encaje con nuestros estándares.

SU ELECCIÓN

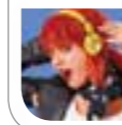
A nuestros clientes le ofrecemos elegir entre:

Una colección de moda a disposición desde nuestros almacenes en Bélgica, con un formato de pedidos muy bajo.

Una colección más amplia para elegir, desarrollada y originada para sus necesidades en una CMP sorprendentemente baja (indicada en nuestro catálogo como "contra pedido").

Tapices y conceptos para proveer para su marca o sus requerimientos específicos.

We are the Papilio family,
I've got all my sisters with me
We are the Papilio family,
Get up everybody and sing



Living life is fun and **PEPPER** has just begun in rags and shags she's commanding her share graphic and whimsical trendy and hip could you deny her, we wouldn't dare

4



POEM has joined us with romance around her pretty muted colours to soften your day and blooming in countryside hues she's too charming only for us to say

40



In praise of luxurious elegance here's **PRIDE** warm rich colours with charm and soul in timeless esthetics she's so refined the glamour she brings we cannot hide

52



PURE has a heart too big for this world her love for an authentic natural surround spoils of leather and bamboo aside it's with style that she can be found

88



PAINT has a task, it's under her mask to roam the galleries and spot fine craft she found Jam and Gerd Couckhuyt we're so proud of her, isn't she smart

100



Count on **PLANET** wanting to go far away so great the oriental influences she brings ashore with ethnic and baroque mingled in its abundance of history, we think it's galore

110

Rejoice we can share our six lifestyles so close our goal it will be to give in a family dose that's what we call our golden rule you it will be, our next family jewel

We are the Papilio family,
I've got all my sisters with me
We are the Papilio family,
Get up everybody and sing

The Papilio Sisters



“ Living life is fun and Pepper has just begun in rags and shags she's commanding her share graphic and whimsical trendy and hip could you deny her, we wouldn't dare

PEPPER

A spicy mix of trendy and hip rugs for fun loving teenagers and the younger ones.

Un mélange pimenté des tapis tendances et prestigieux pour les adolescents qui adorent s'amuser et pour les plus jeunes.

Una mezcla condimentada de alfombras innovadoras y modernas para adolescentes que les encanta la diversión y para los más jóvenes de la casa.

VINTAGE

This collection with its high degree of rock-'n-roll can best be described as trendy and cool. The denim sense feels nice and has an impeccable quality. The fabric is 100% cotton and has a striking pattern. A tad rough, a tad special. The exciting texts and the robust finish with iron eyelets give this collection a young and spontaneous look.

Costaud et imperturbable - la meilleure description de cette collection d'une grande valeur rock-'n-roll. La sensation denim est agréable, d'une qualité infaillible. Cent pour cent coton avec un stylisme frappant. Une pincée de robustesse. Une pincée d'exclusivité. Des textes frappants en combinaison avec une finition solide et des anneaux de voile en fer donnant à cette série un charme jeune et spontané.

Robusta y sobria, es la mejor descripción para esta colección con un alto índice de rock-'n-roll. La agradable sensación de denim, infalible en su calidad. Ciento por ciento algodón y con un diseño que a nadie deja indiferente. Un poco robusta. Un poco aparte. Textos apasionantes y un acabado robusto con ojetes de acero, ofrecen a esta colección un atractivo joven y espontáneo.



QUOTE RPQU01-2222
Printed Canvas with Eyelets and Leather Details, Total weight 2400 g/m²
Service: 120x170cm



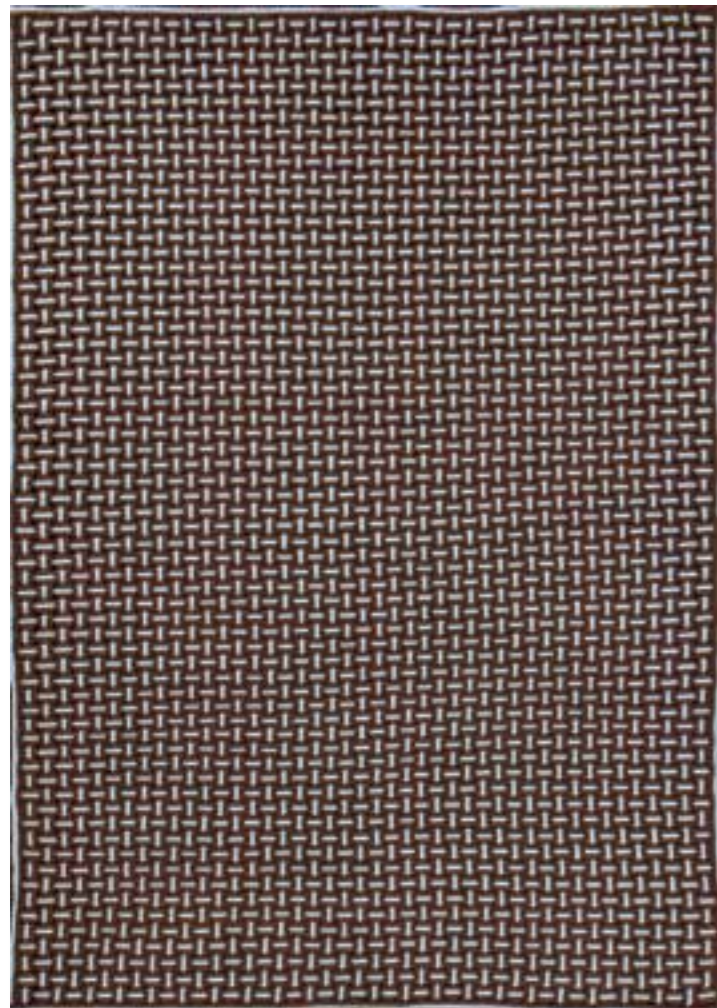
QUOTE RPQU03-6666
Printed Canvas with Eyelets and Leather Details, Total weight 2400 g/m²
Service: 120x170cm

FLUO

This is a real teaser in the living environment. Colour is used in order to evoke light and create atmosphere. This is the exact aim of the "Fluo" collection. A youthful and sporty aura, hand-woven or produced in a tough and firm 'linen connection'. The sharp and bright colours provide enthusiasm and energy; they challenge you and are bursting with life. This rug line is a striking and energetic collection of beautiful and pleasant colour effects.

Un véritable taquin dans votre habitat. On utilise la couleur comme moyen d'exprimer la luminosité et créer une bonne ambiance. C'est exactement ce que la collection "Fluo" ambitionne. Une aura jeune et sportive, tissé main ou fait dans une structure de lin costaud et solide. Des couleurs vives créent de l'enthousiasme et de l'énergie, taquent et sont pleines de vie. Cette gamme de tapis constitue une collection énergique et frappante avec des effets de couleurs magnifiques et agréables.

Un verdadero rompecabezas en el entorno doméstico. El colour como medio para expresar luminosidad y los colores nítidos, claros y atrevidos, hacen que su casa y su vida zumben con nuevas energías aportan ambiente. Esto es precisamente lo que persigue la colección "Fluo". Un aura juvenil y deportiva, tejida a mano o confeccionada en una robusta y sólida 'conexión de lino'. Los nítidos y claros colores ofrecen vida y energía., nos desafían e irradian ganas de vivir. Esta serie de alfombras es una serie notablemente energética de bellos y agradables efectos de colour.



TOKYO RPTOK1-1130
100% Polyester Woven Ribbons, Total weight 4000 g/m²
Service: 120x170cm



TOKYO RPTOK1-7533
100% Polyester Woven Ribbons, Total weight 4000 g/m²
Service: 120x170cm



FLUO
Close-up

RPFLU1-6666



RPFLU1-5555
Service: Ø 70x70cm, 80x150cm



RPFLU1-7777
Service: Ø 70x70cm, 80x150cm



FLUO RPFLU1-6666
100% Polyester in "Real" Fluo Colours, Total weight 2500 g/m²
Service: Ø 70x70cm, 80x150cm



FLUO RPFLU1-2222
100% Polyester in "Real" Fluo Colours, Total weight 2500 g/m²
Service: Ø 70x70cm, 80x150cm



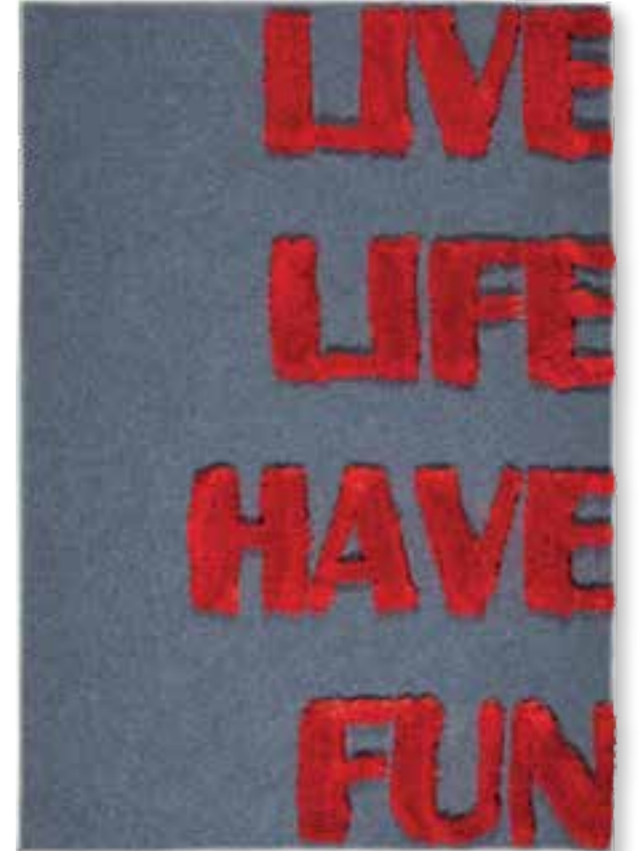
CRASH
Close-up

RPCRA3-4006



CRASH
Polyester felt with a shaggy design, Total weight 2000 g/m²
Service: 120x170cm

RPCRA3-4006



CRASH
Polyester felt with a shaggy design, Total weight 2000 g/m²
Service: 120x170cm

RPCRA2-4007



CRASH
Polyester felt with a shaggy design, Total weight 2000 g/m²
Service: 120x170cm

RPCRA1-4003



BONES RPBON1-4055
Flatweave Cotton, Total weight 1800 g/m²
Service: 120x170cm
REVERSABLE RUG!



PEACE
Close-up

RPPE01-4022

REVERSABLE RUG!



PEACE
Flatweave Cotton, Total weight 1800 g/m²
Service: 120x170cm

RPPE01-4022



POPCORN
Close-up

RPPOPC-9999

RECYCLED
High content recycled materials used

Lifestyle **PEPPER**



POPCORN
100% Recycled Cotton, Total weight 3500 g/m²
Service: 120x170cm

RPPOPC-9999



Your faithful blue denim jeans has endured washing, beating, folding, travelling, working, sweating, and eventually it has been abandoned. Where its previous life ended, it's now being re-cycled to be re-worked without additional finishing into these rebellious rugs.

Votre jeans bleu denim fidèle a enduré le lavage, pliage, battage, voyage, travail et transpiration. Finalement il a été abandonné. Lors de la fin de sa vie précédente, il est maintenant recyclé et retravaillé sans finition supplémentaire dans ces tapis rebelles.

Su fiel vaquero azul denim ha aguantado lavados, golpes, pliegues, viajes, trabajos, sudor y finalmente, ha sido abandonado. No importa dónde hubiere terminado su vida anterior, ahora esta siendo reciclado para ser re-elaborado sin el acabado adicional estos rebeldes tapices.



ZIPPER

RPZIP1-3333

Recycled Denim and Jeans Garments, Total weight 2400 g/m²

Service: 120x170cm

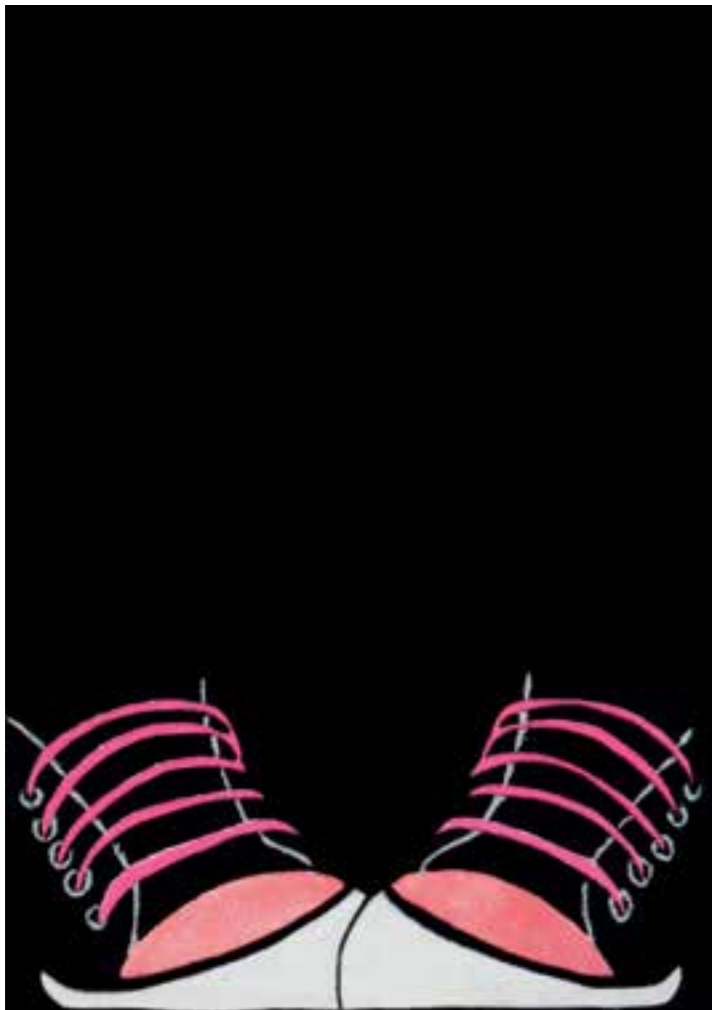
Small variations possible



DENIM JEANS RPDEJE-3003
Recycled Denim Flatweave, Total weight 2500 g/m²
Service: 120x170cm



WRINKLE RPWRIN-3333
Recycled Denim Shag, Total weight 4000 g/m²
Service: 120x170cm



PUNK RPPU14-4442
Handtufted Polyester with PVC Applications, Total weight 2600 g/m²
Service: 120x170cm



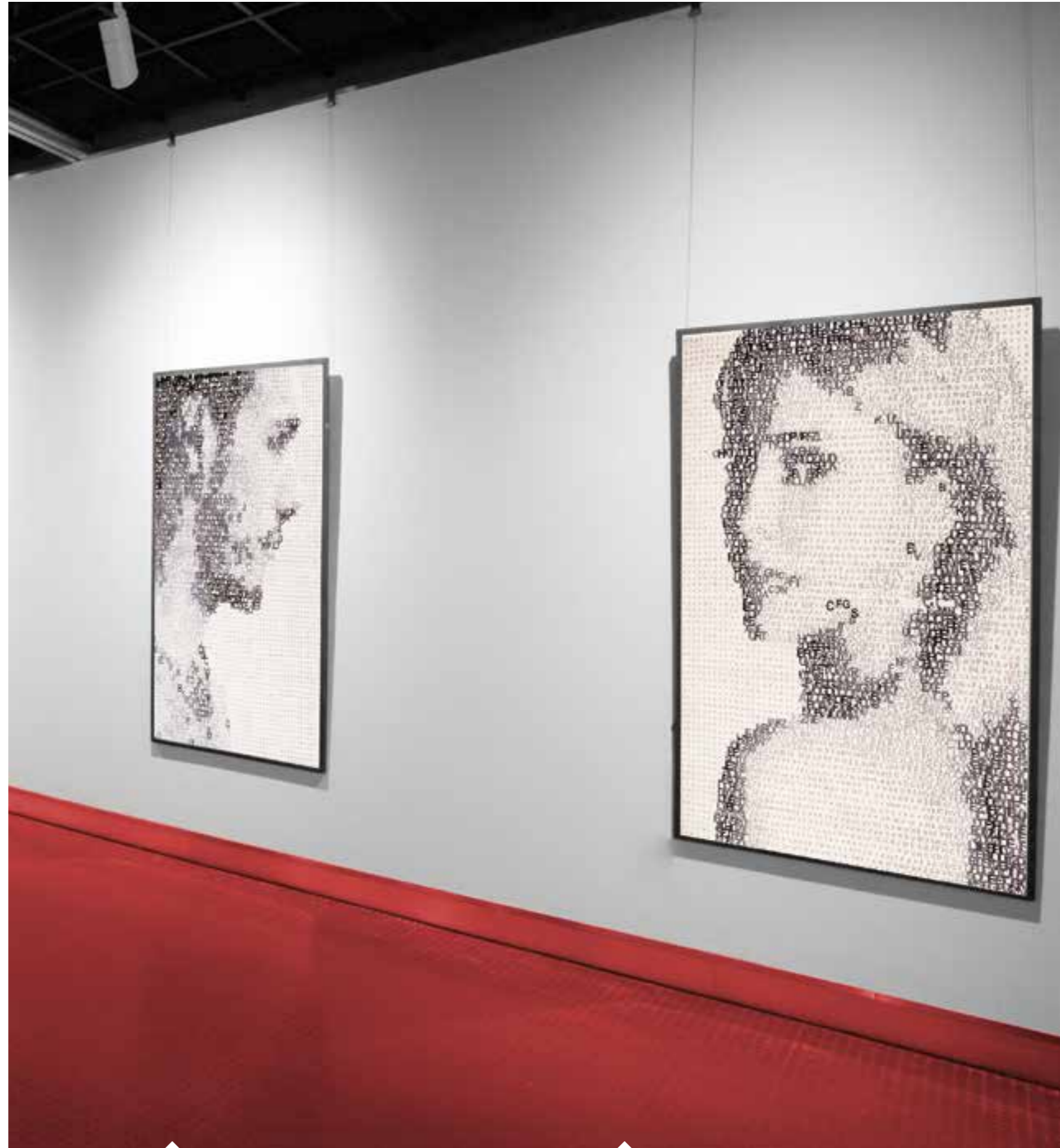
PUNK RPPUN1-3737
Handtufted Polyester with PVC Applications, Total weight 2700 g/m²
Service: 120x170cm

ALPHABET

No other use of the alphabet could have better translated the emotional strength radiating between these opposites.

Il n'y a aucune autre utilisation de l'alphabet qui puisse mieux traduire la force émotionnelle étincelante entre ces opposés.

Ningún otro uso del alfabeto podría traducir mejor la solidez emocional que se aprecia entre estas dos oposiciones.



FACE RPFE01-4040
100% Letters of the Alphabet in Polyester, Total weight 3000 g/m²
Service: 160x230cm, 190x280cm

FACE RPFE02-4040
100% Letters of the Alphabet in Polyester, Total weight 3000 g/m²
Service: 160x230cm, 190x280cm



MOOD
Close-up

RPMT01-4470



ACTIO
Soft Microfiber Print, Total weight 2200 g/m²
Service: 120x170cm

RPAC15-4407



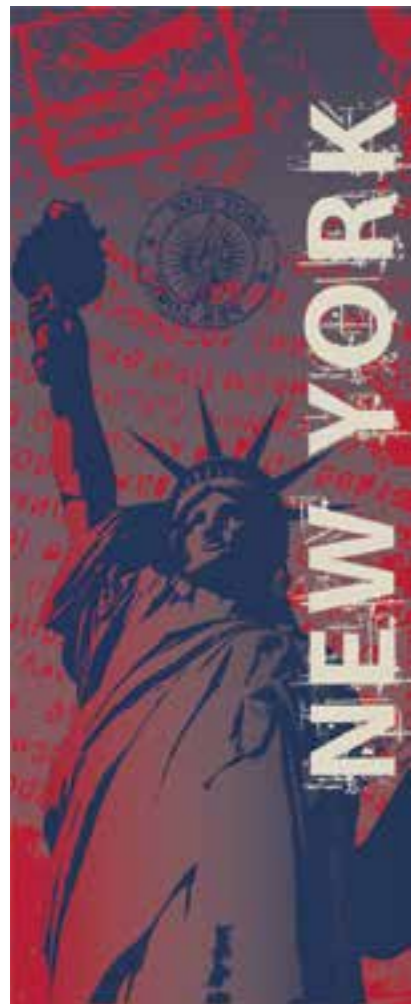
MOOD
Handtufted Polyester and "Giant" Zipper, Total weight 2700 g/m²
Service: 120x170cm

RPMT01-4470



ACTIO
Soft Microfiber Print, Total weight 2200 g/m²
Service: 120x170cm

RPAC14-4400



ACTIO RPAC16-7373
Soft Microfiber Print, Total weight 2200 g/m²
Service: 80x200cm



ACTIO RPAC17-3699
Soft Microfiber Print, Total weight 2200 g/m²
Service: 80x200cm



ACTIO RPAC18-4040
Soft Microfiber Print, Total weight 2200 g/m²
Service: 80x200cm



ACTIO 4 RPAC04-4099
Soft Microfiber Print, Total weight 2200 g/m²
Service: 120x170cm



ACTIO 13 RPAC13-4433
Soft Microfiber Print, Total weight 2200 g/m²
Service: Ø 120x120cm



ACTIO 1 RPAC01-4099
Soft Microfiber Print, Total weight 2200 g/m²
Service: 120x170cm



IBIZA RPIBIZ-3333
 Service: Ø 90x90cm, 120x170cm



RPIBIZ-2222
 Service: Ø 90x90cm, 120x170cm



RPIBIZ-3333
 Service: Ø 90x90cm, 120x170cm



IBIZA RPIBIZ-3030
 100% Fine and Soft Polyester, Total weight 2300 g/m²
 Service: Ø 90x90cm, 120x170cm



IBIZA RPIBIZ-3037
 100% Fine and Soft Polyester, Total weight 2300 g/m²
 Service: Ø 90x90cm, 120x170cm



RPBOS2-3333
Service: 60x90cm, 120x170cm



RPBOS2-6666
Service: 60x90cm, 120x170cm



BOSTON
100% Polyester, Total weight 1800 g/m²
Service: 60x90cm, 120x170cm

RPBOS2-7777

Other colours available in PRIDE page 76-77

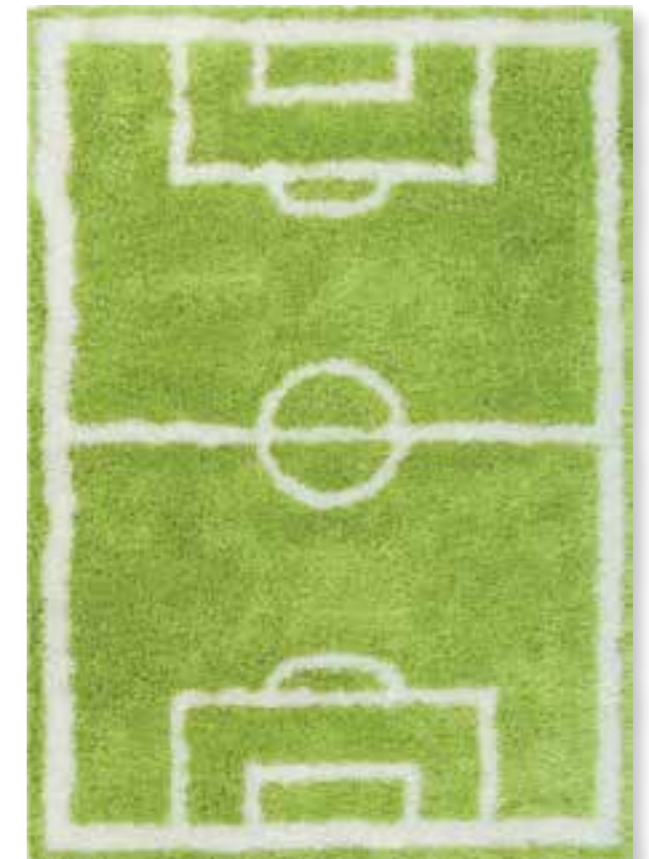


BOSTON RPBOS2-2222
100% Polyester, Total weight 1800 g/m²
Service: 60x90cm, 120x170cm



SOCCKER
Close-up

RPSOC1-6666



SOCCKER

RPSOC1-6666

100% Polyester, Total weight 2400 g/m²
Service: 120x170cm



DUNK

RPDUN1-7575

100% Polyester, Total weight 1600 g/m²
Service: 120x170cm



“ Poem has joined us with romance abound
her pretty muted colours to soften your day
and blooming in countryside hues
she's too charming only for us to say

POEM

Spring is in the air with this collection of blooms in countryside hues and pastel nuances.

Le printemps est dans l'air avec cette collection florissante caractérisée par les nuances rurales et les pastels.

La primavera se hace sentir con esta colección de flores en matices campestres y tonos pastel.

3D STRUCTURES

Are you looking for elegant and exclusive rugs? The 3D collection has everything that is needed in order to evoke a romantic atmosphere. This line, flat-woven or in a thick 3D texture, with romantic pastel shades and a combination of different structures, keeps on surprising. Furthermore, the woollen rugs are of top quality and excel as to resistance, durability and softness.

Êtes-vous à la recherche de tapis élégants et exclusifs ? La collection 3D a tout ce qu'il faut pour évoquer un soupçon de romantisme. Cette gamme de tapis, tissés à plat ou avec une texture 3D épaisse, aux tons pastels et une combinaison de structures différentes, continue de nous étonner. En outre, les tapis en laine, d'une exceptionnelle qualité, brillent de résistance, durabilité et douceur.

¿Busca un recubrimiento para suelos elegante y exclusivo? La serie 3D tiene todo para evocar una pizca de romanticismo. Tejido plano o con una textura gruesa y acolchada, con románticas tonalidades pastel y una combinación de 3D estructuras, hacen que esta serie sea siempre sorprendente. Por otra parte, las alfombras de lana son de excelente calidad. Destacan por su resistencia al desgaste, durabilidad y suavidad.



HANNAH
3D Woollen Flatweave, Total weight 1600 g/m²
Service: 160x230cm

RPHAN1-8022



HANNAH
Close-up

RPHAN1-8022



Other colours available in **PURE** page 96

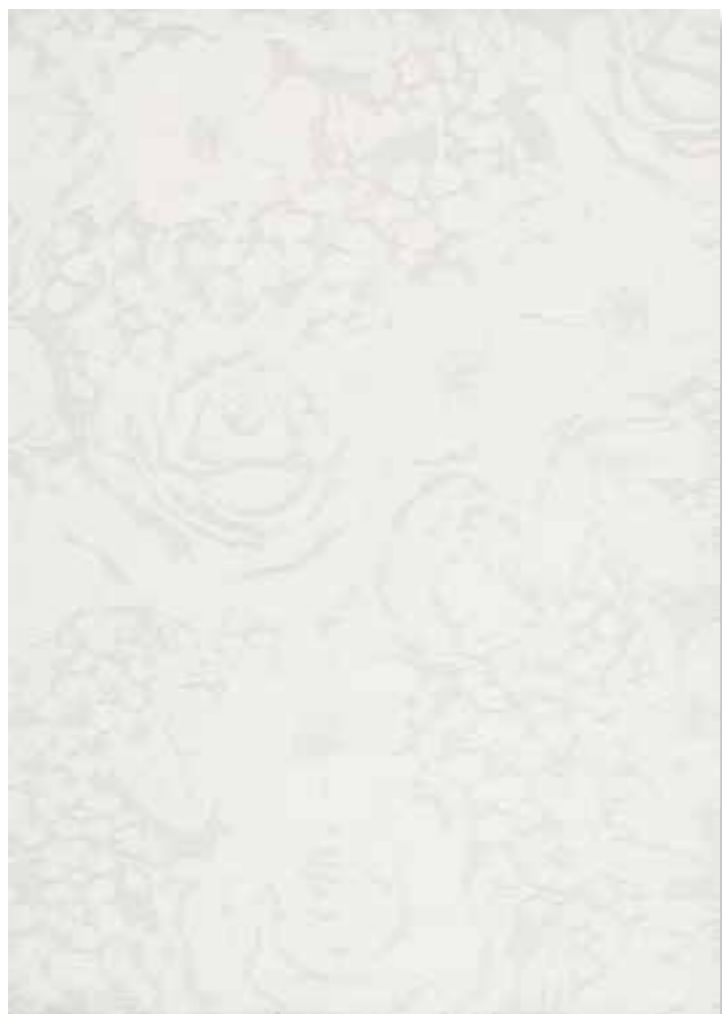
NIKI
A perfect harmony of cotton chenille and cowhide on a cotton base, Total weight 1700 g/m²
Service: 160x230cm

RPNIK1-2222



NIKI
Roomshot

RPNIK1-2222



LAURA RPLAU1-0001
100% Woven Polyester Microfiber, Total weight 2000 g/m²
Service: 160x230cm





LUCCA
Close-up

RPLUCC-8800

DOLCE & LUCCA - MATCHING qualities!

DOLCE stands for a soft and smooth feeling under the dining room table whereas LUCCA in the same matching colours offers a lush cocooning shag for the living room.



RPDOLC-8800

Service: 80x150cm, 120x170cm,
160x230cm, 190x280cm



RPLUCC-8800

Service: 80x150cm, 120x170cm,
160x230cm, 190x280cm



RPDOLC-2222

Service: 80x150cm, 120x170cm,
160x230cm, 190x280cm



RPLUCC-2222

Service: 80x150cm, 120x170cm,
160x230cm, 190x280cm

DOLCE specifications: 100% Polyester Microfiber, Total weight 2300 g/m²

LUCCA specifications: 100% Polyester, Total weight 1800 g/m²

Other colours available in **PRIDE** page 72-75



LUCCA
Close-up

RPLUCC-2222

DOLCE

RPDOLC-2222



“ *In praise of luxurious elegance here's Pride
warm rich colours with charm and soul
in timeless esthetics she's so refined
the glamour she brings we cannot hide*

PRIDE

Timeless sophistication is the key in this elegantly coloured and styled collection.

Sophistication intemporelle est l'âme de cette collection distinguée avec ses couleurs gracieuses.

La sofisticación atemporal es la clave en esta colección estilizada y de elegantes colores.



SILENCE RPSIL1-1111
LoomKnotted BambooSilk overprinted, Total weight 3500 g/m²
Service: 160x230cm, 200x290cm, 240x340cm



SILENCE
Roomshot

RPSIL1-1111



SILENCE
Close-up

RPSIL3-3040



SILENCE

LoomKnotted BambooSilk overprinted, Total weight 3500 g/m²
Service: 160x230cm, 200x290cm, 240x340cm

RPSIL3-3040



RIGA
Close-up

RPRIG1-4030

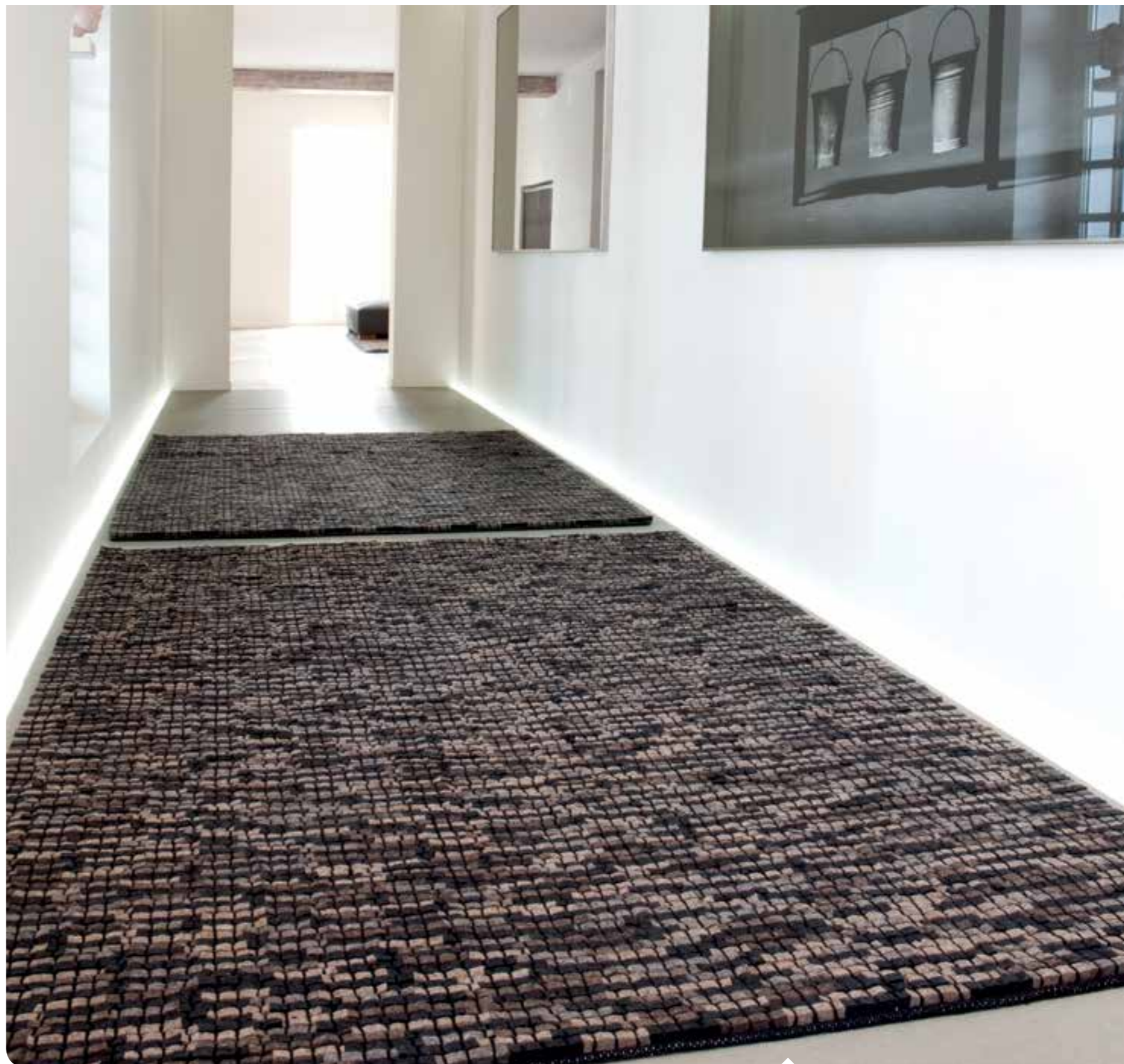


RIGA
3D Woollen Flatweave, Total weight 1600 g/m²
Service: 160x230cm

RPRIG1-4030



GRANITE RPGRN1-4040
Felted wool on a cotton base, Total weight 5200 g/m²
Service: 160x230cm, 200x290cm



GRANITE
Roomshot

RPGRN1-4040



BOGATA
Close-up

RPBOG1-4000



BOGATA RPBOG1-4000
Dense Plain Viscose Rug, Total weight 4500 g/m²
Service: 160x230cm, 200x290cm, 240x340cm



BOGATA RPBOG1-4004
Dense Plain Viscose Rug, Total weight 4500 g/m²
Service: 160x230cm, 200x290cm, 240x340cm



BELLAGIO RPBELL-1111
Tip-sheared Viscose Loops - Vintage Look, Total weight 4000 g/m²
Service: 160x230cm, 200x290cm, 240x340cm



BELLAGIO RPBELL-4440
Tip-sheared Viscose Loops - Vintage Look, Total weight 4000 g/m²
Service: 160x230cm, 200x290cm, 240x340cm



BELLAGIO RPBELL-1818
Tip-sheared Viscose Loops - Vintage Look, Total weight 4000 g/m²
Service: 160x230cm, 200x290cm, 240x340cm



BELLAGIO RPBELL-4040
Tip-sheared Viscose Loops - Vintage Look, Total weight 4000 g/m²
Service: 160x230cm, 200x290cm, 240x340cm



DIAMOND
Close-up

RPDIA1-4004



BAMBOO
High content natural materials used

DIAMOND RPDIA1-4004
BambooSilk Loomknotted, Total weight 3500 g/m²
Service: 160x230cm, 200x290cm, 240x340cm



ELITE
Woolen Kilim High Low, Total weight 2300 g/m²
Service: 160x230cm, 200x290cm, 240x340cm

RPELIT-4040



ELITE
Woolen Kilim High Low, Total weight 2300 g/m²
Service: 160x230cm, 200x290cm, 240x340cm

RPELIT-1818



COSTES RPCOS1-8888
Viscose and Shaggy Polyester Border, Total weight 4200 g/m²
Service: 160x230cm, 200x290cm



COSTES RPCOS1-4000
Viscose and Shaggy Polyester Border, Total weight 4200 g/m²
Service: 160x230cm, 200x290cm



DOLCE & LUCCA - MATCHING qualities!

DOLCE stands for a soft and smooth feeling under the dining room table whereas LUCCA in the same matching colours offers a lush cocooning shag for the living room.



RPDOLC-8800
Service: 80x150cm, 120x170cm,
160x230cm, 190x280cm



RPLUCC-8800
Service: 80x150cm, 120x170cm,
160x230cm, 190x280cm



RPDOLC-1818
Service: 80x150cm, 120x170cm,
160x230cm, 190x280cm



RPLUCC-1818
Service: 80x15cm, 120x170cm,
160x230cm, 190x280cm



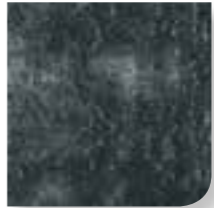
RPDOLC-4008
Service: 80x150cm, 120x170cm,
160x230cm, 190x280cm



RPLUCC-4008
Service: 80x150cm, 120x170cm,
160x230cm, 190x280cm



RPDOLC-4004
Service: 80x150cm, 120x170cm,
160x230cm, 190x280cm



RPLUCC-4004
Service: 80x150cm, 120x170cm,
160x230cm, 190x280cm

DOLCE specifications: 100% Polyester Microfiber, Total weight 2300 g/m²
LUCCA specifications: 100% Polyester, Total weight 1800 g/m²

Other colours available in **POEM** page 48-51



LUCCA
Close-up

RPLUCC-4008



DOLCE
Close-up

RPDOLC-4008

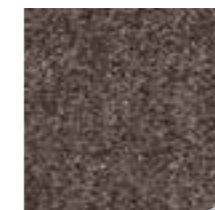


BOSTON
Close-up

RPBOS2-8888



RPBOS2-4040
Service: 60x90cm, 120x170cm, 160x230cm



RPBOS2-1818
Service: 60x90cm, 120x170cm, 160x230cm

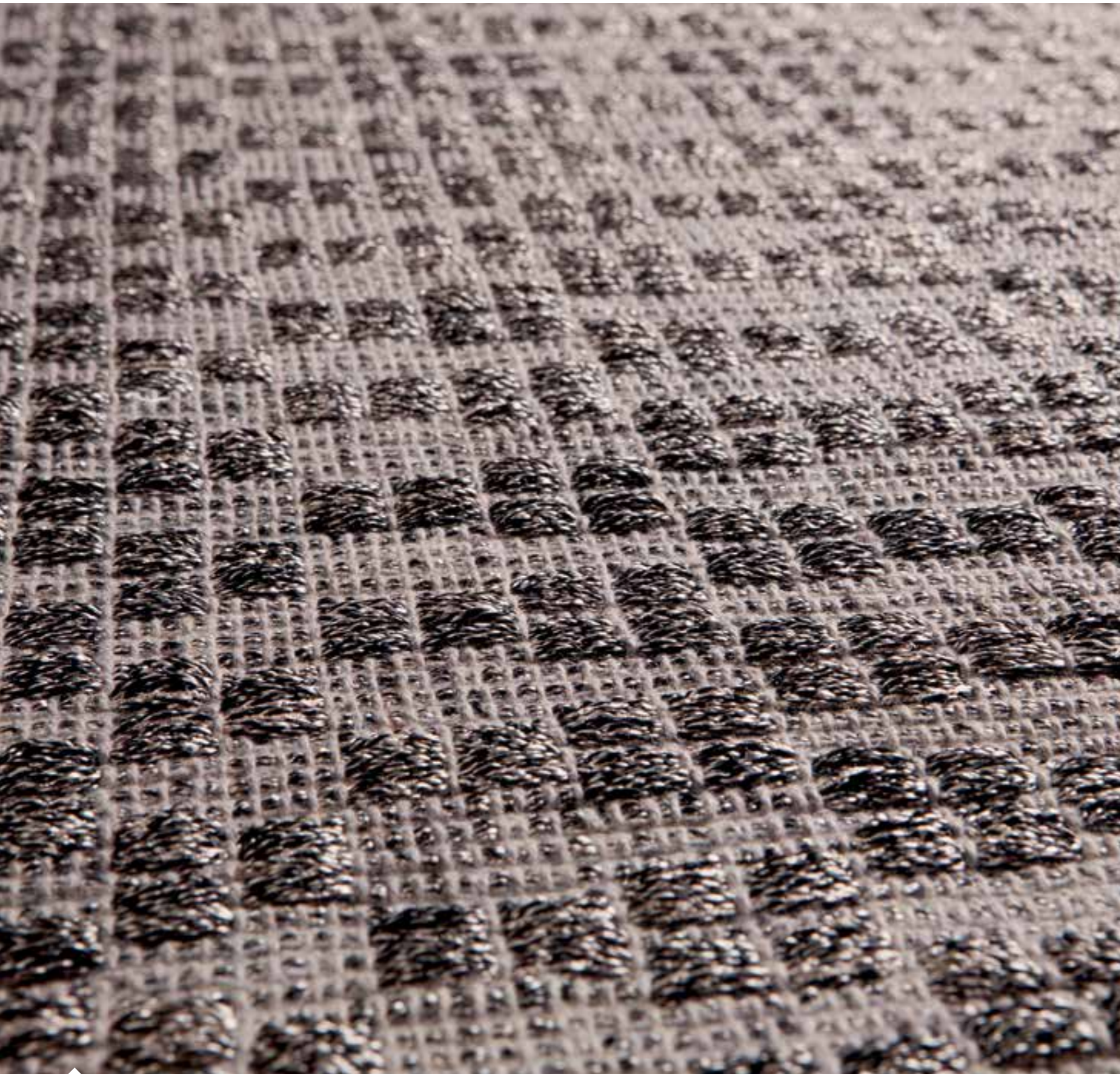


RPBOS2-4400
Service: 60x90cm, 120x170cm, 160x230cm



BOSTON RPBOS2-8888
Service: 60x90cm, 120x170cm, 160x230cm
100% Polyester, Total weight 1800 g/m²

Other colours available in **PEPPER** page 36-37



SONATA
Close-up

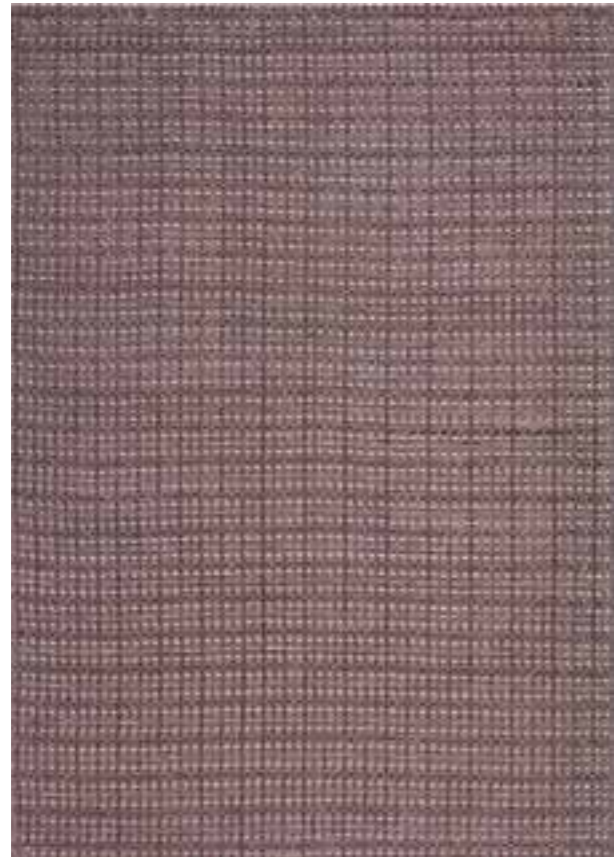
RPSO1-4040



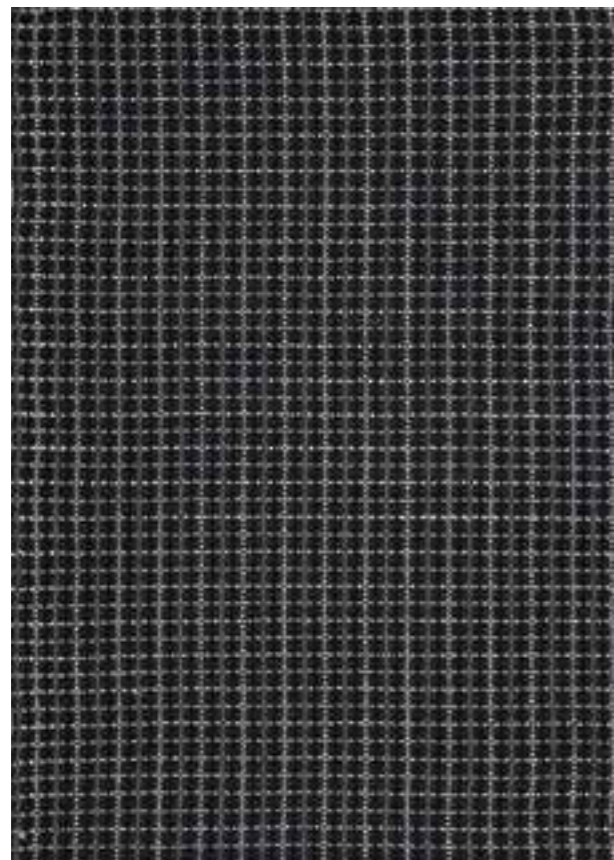
SONATA

RPSO1-4040

Polyester Flatweave on a Cotton base, Total weight 2300 g/m²
Service: 160x230cm, 200x290cm



STYLE RPSTY3-1111
Polyester flatweave on a Cotton base, Total weight 2600 g/m²
Service: 160x230cm, 200x290cm



STYLE RPSTY3-4444
Polyester flatweave on a Cotton base, Total weight 2600 g/m²
Service: 160x230cm, 200x290cm



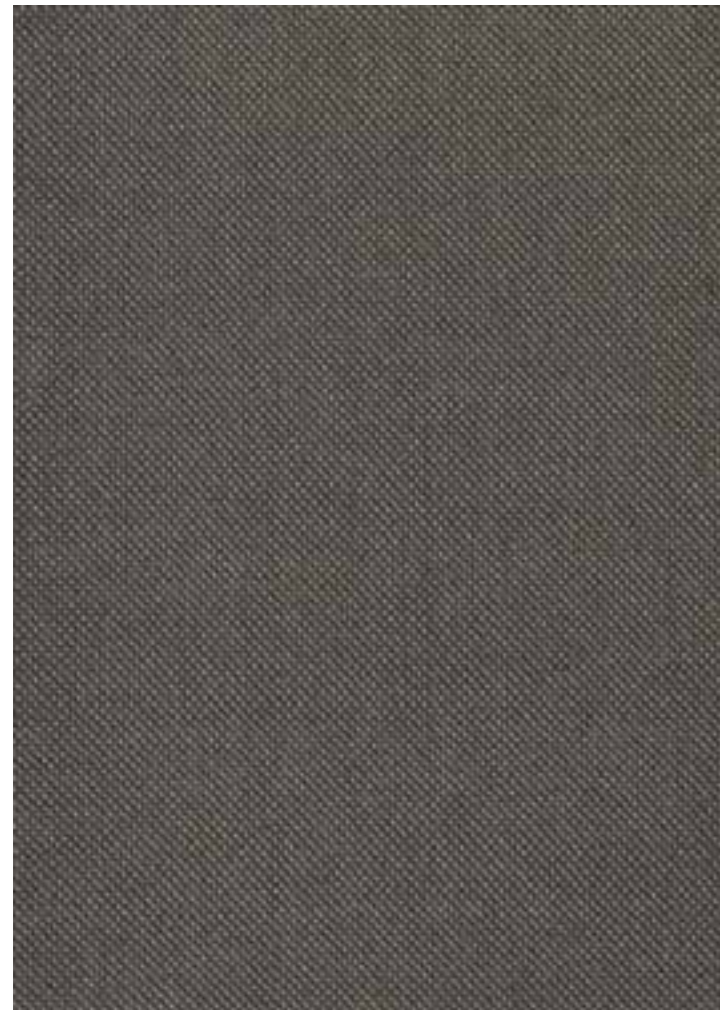
STYLE RPSTY4-4040
Polyester flatweave on a Cotton base, Total weight 2600 g/m²
Service: 160x230cm, 200x290cm

OUTDOOR

Outdoor rugs turn lounging on a terrace into a refined feast. After all, rugs are real atmosphere creators. Furthermore, this collection is extremely powerful, both as to structure as well as to design. These rugs are resistant to every climate condition. The flat-woven polyester coated with PVC – a technique from the furniture industry – makes a great cross-over. It is an absolute novelty with outstanding class and elegance. The collection gives style to the new form of lounging in the open air. Are you looking forward to the summer as well?

Flâner sur votre terrasse devient un festin raffiné grâce aux tapis extérieurs. Après tout, des tapis sont de véritables créateurs d'atmosphère. Cette collection est d'une construction solide et d'un stylisme exceptionnel. Ces tapis résistent à toutes les conditions climatiques. Le polyester tissé à plat avec un revêtement en pvc – une technique en provenance de l'industrie du meuble – font un mariage exceptionnel. Une innovation sincère d'une grande classe et élégance. Cette gamme donne un style à la nouvelle forme de flâner en plein air. Attendez-vous aussi l'été avec impatience?

Las alfombras para exterior hacen que las reuniones en cualquier terraza sean una elegante celebración. Las alfombras son al fin y al cabo verdaderas creadoras de ambiente. Por otra parte, esta colección es muy fuerte en cuanto a su confección y diseño. Las alfombras soportan cualquier momento climatológico. Poliéster tejido plano recubierto con PVC, una técnica proveniente de industria del mueble, hace aquí una increíble polinización. Una novedad absoluta de gran clase y elegancia. La colección le ofrece estilo a la nueva manera de estar al aire libre. ¿Le dan ganas de que el verano llegue lo más rápidamente posible?



ZEN RPZEN1-4004
100% Polypropylene Handwoven, Total weight 3000 g/m²
Service: 160x230cm, 200x290cm



OUTDOOR
also suitable for indoor use

YOGA RPYOG1-4004
100% Polypropylene Handwoven, Total weight 1800 g/m²
Service: 160x230cm, 200x290cm

The humble inner tube has been given a second life following its enduring service in the world's most popular transportation mode, the bicycle.

Men and women collect from their local bicycle repair shops the worn tubes, which would otherwise end up in land fill or slum neighbourhoods.

These tubes are slit and handcrafted into a woven structure.

No chemicals nor any finishing products are used in the manufacturing process. This is a truly honest and eco-responsible recycled product.

Can you spot the tube size markings of the previous owner? They're still telling their story.

This sturdy rug is also suitable for outdoor use.

Le tube intérieur humble a été donné une seconde vie après son service durable dans le mode de transport le plus populaire du monde entier : le vélo.

Les ouvriers collectent les tubes usés dans les ateliers de réparation de bicyclettes locaux. Au lieu de terminer dans des quartiers délaissés ou sur des taudis, les tubes sont recyclés. Ils sont fendus manuellement et utilisés dans une structure tissée main.

Dans le procès de fabrication nous n'utilisons ni produits chimiques, ni produits de finition. Le produit fini est un vrai produit recyclé éco-responsable et honnête.

Pouvez-vous discerner les marquages de taille du tube du propriétaire précédent? Ils vous racontent encore leurs histoires.

Ce tapis costaud est également adapté pour l'usage extérieur.

A la humilde cámara de neumáticos se le ha dado una segunda vida después de su duradero servicio en el medio de transporte más popular del mundo: la bicicleta.

Hombres y mujeres recolectan en las tiendas locales de reparación de bicicletas las cámaras de neumáticos usadas, que de otra manera terminarían en vertederos públicos o en barrios muy pobres.

Estas cámaras de neumáticos se cortan y a mano son confeccionadas en una estructura tejida.

En el proceso de manufacturación no se utilizan químicos ni productos de acabado. Se trata de un producto reciclado verdaderamente honesto y ecológicamente responsable.

¿Puede reconocer las marcas del tamaño del neumático de su anterior propietario? Aún siguen contando su historia.

Esta sólida alfombra también es apta para su uso en exterior.



reddot design award
winner 2011



RECYCLED
High content recycled materials used

OUTDOOR
also suitable for indoor use

CYCLO
Recycled Bike Tubes and Polypropylene, Total weight 1800 g/m²
Service: 160x230cm, 200x290cm, 240x340cm

RPCYC1-4004



CYCLO 3
Close-up

RPCYC3-4411

OUTDOOR
also suitable for indoor use

RECYCLED
High content recycled materials used



CYCLO

RPCYC1-8040

Recycled Bike Tubes and Polypropylene, Total weight 1800 g/m²
Service: 160x230cm, 200x290cm, 240x340cm



CYCLO 3

RPCYC3-4411

Recycled Bike Tubes and Polypropylene, Total weight 2400 g/m²
Service: 160x230cm, 200x290cm, 240x340cm



“ *Pure has a heart too big for this world
her love for an authentic natural surround
spoils of leather and bamboo aside
it's with style that she can be found* ”

PURE

Stylish collection inspired on the natural beauty that surrounds us.

Une collection gracieuse inspirée par la beauté naturelle qui nous entoure.

Elegante colección inspirada en la belleza natural que nos rodea.

CUBAN ATMOSPHERE

How can you evoke an atmosphere of pure authenticity by means of rugs? That was the main issue for the designers of this attractive and warm "Havana" collection. The answer is as overwhelming as it is sublime. This collection demonstrates how materials are full of meaning. The dead honest wool and strips of cowhide with their warm look and composition call to mind the wonderful exotic Cuban atmosphere. Add the dark and warm matching colours and the party is complete. Care for a Daiquiri or a Mojito?

Comment évoquer une atmosphère d'une véritable authenticité par le biais d'un tapis? Tel était la question fondamentale pour les dessinateurs de cette collection "Havana" séduisante et chaleureuse. La réponse est aussi bien impressionnante que sublime. La gamme montre comment les matériaux peuvent avoir un sens particulier. La laine franche comme l'or et des bandes de peau de vache évoquent la merveilleuse ambiance exotique cubaine. Ajoutez les couleurs foncées chaudes assorties et la fête peut commencer. Un Daiquiri ou un Mojito vous tente?

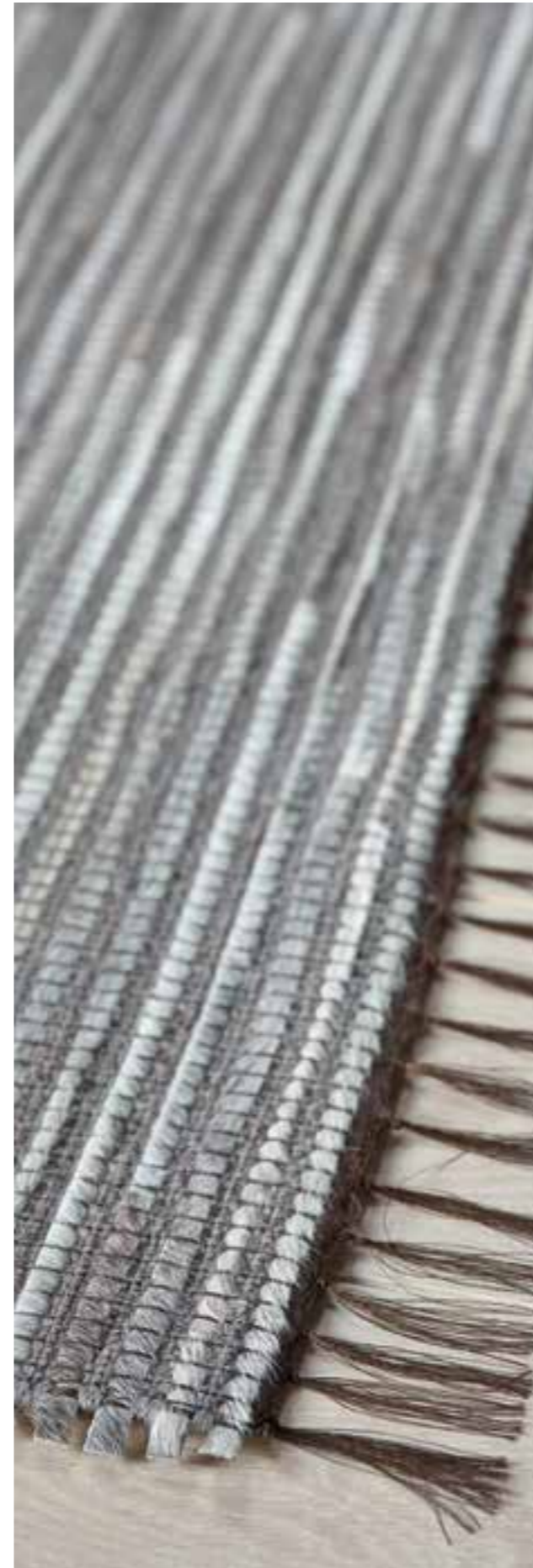
¿Cómo evocar un ambiente de íntegra autenticidad con un recubrimiento de suelos? Esa fue la pregunta clave para los diseñadores de esta seductora y cálida colección "Havana". La respuesta es tan contundente como sublime. La colección demuestra de que manera las aplicaciones del material pueden ser llenas de significado. La lana más pura y trozos de cuero de vaca rememoran con su cálida presencia y composición, la deliciosa y exótica animación en Cuba. Añada a esto los adecuados y cálidos matices oscuros, y la fiesta es completa. ¿Le dan ganas de servirse ya un Daiquiri o un Mojito?



HAVANA

Flatweave of wool & cowhide, Total weight 1400 g/m²
Service: 160x230cm, 200x290cm

RPHVN1-4040



LEATHER
High content natural materials used

HAVANA
Roomshot

RPHVN1-4040



Bamboo fiber, praised as 'the natural green and eco-friendly new type of textile material of the 21st century', returns completely to nature at the end! Bamboo non-woven fabric is made of pure bamboo pulp, which has similar properties as viscose fibers.

La fibre du bambou qu'on estime être le nouveau type de matériel textile naturel, vert et écophile du 21ième siècle retourne à la fin complètement à la nature! Le tissu de bambou est fabriqué de pulpe de bambou pure, qui a des qualités similaires aux fibres viscose.

La fibra de bambú, elogiada como 'el nuevo tipo de material textil verde y ecológico para el siglo XXI', al finalizar su ciclo, ¡vuelve completamente a la naturaleza! Las telas no tejidas de bambú son confeccionadas de pura pulpa de bambú, la que tiene propiedades similares a las fibras de viscosa.



BAMBOO RPBMB1-8888
Loomknotted BambooSilk, Total weight 3500 g/m²
Service: 160x230cm, 200x290cm, 240x340cm



BAMBOO RPBMB2-4040
Loomknotted BambooSilk, Total weight 3500 g/m²
Service: 160x230cm, 200x290cm, 240x340cm



Banana Fiber: The banana fiber is extracted by hand stripping and decortication. It's a 100% eco-friendly fiber. This fiber looks like bamboo fiber. It is strong, shiny, lightweight and biodegradable. Banana fibers were used for making ropes and mats till recent past. With its many qualities getting more popular, the fashion industry is also fast adopting this fiber for the making of various fashion clothing and home furnishings.

Fibre Banane : La fibre banane est extraite par décapage à la main et décortiquée. C'est une fibre 100 % respectueuse de l'environnement. Cette fibre ressemble à la fibre Bambou, elle est forte, brillante, légère et biodégradable. Dans un passé récent les fibres bananes étaient utilisées pour la fabrication des cordes et des paillasons. A cause de la croissance de la popularité de ces multiples qualités, l'industrie de la mode est en train d'adopter rapidement cette fibre pour la fabrication de divers vêtements de mode et revêtements de maison.

Fibra de plátano: la fibra de plátano se extrae por descascarado y descortezado a mano. Se trata de una fibra 100% ecológica. Esta fibra tiene el aspecto de una fibra de bambú. Es fuerte, brillante, liviana y bio-degradable. Hasta hace poco, las fibras de plátano se utilizaban para la confección de cuerdas y alfombras. Gracias a todas estas cualidades, se ha hecho más popular, la industria de la moda también adoptó rápidamente esta fibra para la confección de varias prendas de vestir de moda y mobiliario doméstico.

BANANA
High content natural materials used



BANANA **RPBAN1-4040**
100% Banana Fibers, Total weight 4200 g/m²
Service: 160x230cm, 200x290cm, 240x340cm



BANANA **RPBAN1-1111**
100% Banana Fibers, Total weight 4200 g/m²
Service: 160x230cm, 200x290cm, 240x340cm



Other colours available in **POEM** page 44-45

NIKI **RPNIK1-6666**
A perfect harmony of cotton chenille & cowhide on a cotton base
Total weight 1700 g/m²
Service: 160x230cm



SEASON 1 **RPSEA1-1111**
Recycled Suede Leather on Cotton Base, Total weight 3200 g/m²
Service: 120x170cm, 160x230cm, 200x290cm



LEATHER
High content natural materials used

RECYCLED
High content recycled materials used

SEASON 2 **RPSEA2-6699**
Recycled Suede Leather on Cotton Base, Total weight 3200 g/m²
Service: 120x170cm, 160x230cm, 200x290cm



Continue reading your Sunday paper! Discarded newspapers have been collected, cut into strips and handcrafted into these creative rugs. As the paper's structure has not been interfered with by neither glues nor any other chemicals, this recycling is truly innovative and eco-responsible in its most honest form.

Continuez à lire votre journal de dimanche! Des journaux jetés ont été rassemblés et coupés en bandes pour fabriquer ces tapis créatifs faits main. Vu que la structure du papier n'a pas été traitée avec de la colle ou des produits chimiques, ce recyclage est complètement innovant et fait preuve d'une responsabilité écologique en sa forme la plus honnête.

¡Siga leyendo la edición dominical de su periódico! Se recolectan los periódicos desechados, se cortan en tiras y se convierten en estos creativos tapices. Puesto que en la estructura de papel no interfieren pegamentos ni otros productos químicos; este reciclado es verdaderamente innovador y ecológicamente responsable en su forma más honesta.

RECYCLED
High content recycled materials used
NEWSPAPER
High content recycled materials used



PAPER 2

Recycled News Paper and Jute, Total weight 1100 g/m²
Service: 80x150cm, 120x170cm

RPPAP2-4040



“ *Paint has a task, it's under her mask to roam the galleries and spot fine craft she found Jam and Gerd Couckhuyt we're so proud of her, isn't she smart* ”

PAINT

Rugs designed exclusively for Papilio by acclaimed designers. Ann-Marie Jonckheere (JAM) and Gerd Couckhuyt have created from their artwork a stunning collection with a difference.

Des tapis conçus exclusivement pour Papilio par des designers renommés. Ann-Marie Jonckheere (JAM) et Gerd Couckhuyt ont créé une collection magnifique basée sur leurs œuvres d'art.

Alfombras diseñadas exclusivamente para Papilio por renombrados diseñadores. Ann-Marie Jonckheere (JAM) y Gerd Couckhuyt han creado a partir de sus obras, una sorprendente colección con una diferencia.



Internationally renowned Belgian artist.

Since 1980, Ann-Marie Jonckheere has earned herself a name in visual art with her rust paintings: iron installations leaving rust patterns on white linen.

When she finished her training in decorative art weaving in Ghent her nonconformist approach to textile was a source of inspiration for the textile business, resulting in a fruitful cross-pollination between experimental art and applied textile design.

Thanks to several award-winning designs her oeuvre has already been exhibited three times at the Japan Design Museum in Kyoto and at the Metropolitan Museum in Tokyo. In 1994 she focused mainly on carpet design.

Artiste belge reconnue mondialement.

Ann-Marie Jonckheere s'est fait un nom dans les arts plastiques grâce à une alliance réussie de rouille naturelle et de textile blanc.

Son approche anticonformiste du textile a inspiré des acteurs importants de l'industrie textile. De cette vision résulte une association fructueuse entre art textile expérimental et art appliqué. Elle a déjà vu son oeuvre exposée au Japon Design Museum à Kyoto, au Metropolitan Museum à Tokio, au centre de Design à Montréal Canada, au biennial World Best Design à Seoul au Corée du Sud.

Depuis 2005 elle lance en coopération avec Papilio les JAM-TAPIS.

Jam

Artista belga de renombre internacional.

Desde 1980, Ann-Marie Jonckheere se ha ganado un nombre en las artes visuales con sus pinturas oxidadas: instalaciones de hierro dejan patrones oxidados sobre líneas blancas.

Cuando finalizó su formación como tejedora decorativa en Gante, su enfoque no conformista hacia los textiles fue una fuente de inspiración para la industria textil, resultando en una exitosa polinización cruzada entre el arte experimental y el diseño aplicado a textiles.

Gracias a diversos diseños premiados, su obra ya ha sido exhibida tres veces en el Museo japonés del Diseño en Kyoto y en el Museo Metropolitano en Tokio. Desde 1994 se ha dedicado principalmente al diseño de alfombras.



JAM CRAFT 07 RPJC07-4440
Cow Hair and Leather 3D Pillows, Total weight 4000 g/m²
Service: 160x230cm, 200x290cm, 230x300cm



by courtesy: Hotel Messeyne

JAM CRAFT 07
Roomshot

RPJC07-4440



The Equus collection

The 2012 Jam collection was inspired by horses. By their bodies, their moves, their way of being. By their whole universe. Not only in an abstract way, but also in a very direct and immediate way. The look. The feel. The colour. The structure. The material. The composition.

The soft shaggy carpets refer to the slightly curly manes of some horse breeds. The carpets in leather were woven in saddle leather, in a unique weaving bond.

Like the Indian saddle underpads, the woven carpets have leather edges.

La collection Equus

La collection Jam de 2012 s'inspire de chevaux. De leurs corps et de leurs mouvements. De leur façon d'être, de tout leur univers. Non seulement dans l'abstrait, mais aussi dans le concret. Le look. Le feel. La couleur. La structure. Le matériel. La composition.

Les tapis shaggy doux réfèrent à la crinière légèrement ondulée de certaines races de chevaux. Les tapis en cuir sont faits en cuir de selle, avec une trame spécialement conçue.

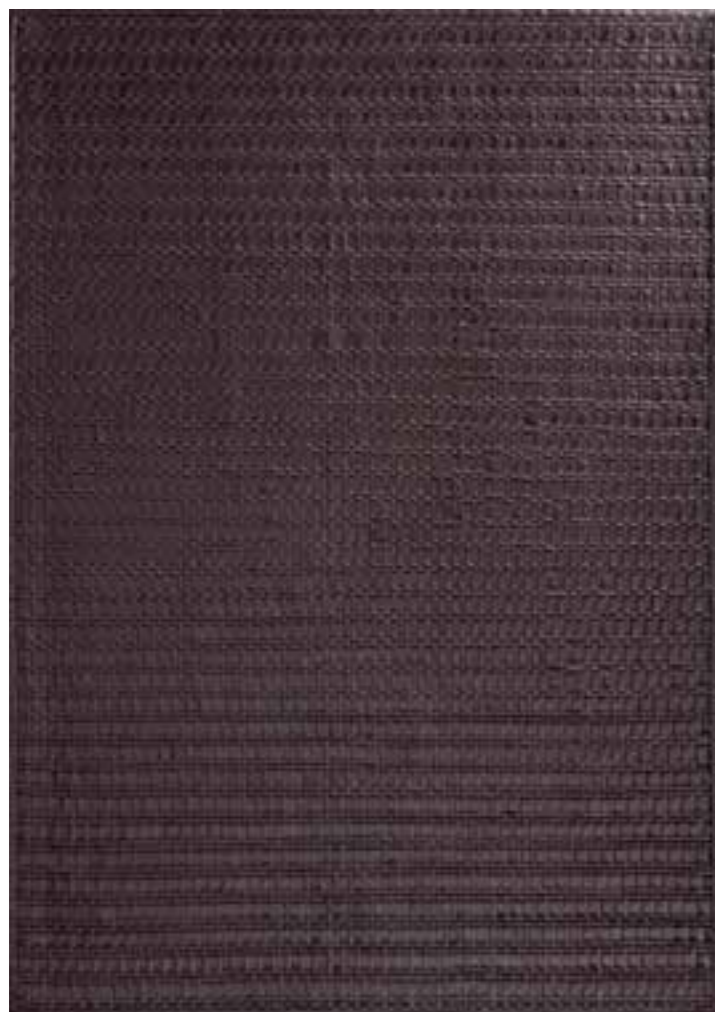
Comme les sous-selles indiens, ces tapis ont un bord en cuir.

La colección Equus

La colección Jam 2012 está inspirada en los caballos. Por sus cuerpos, sus movimientos, su manera de ser. Por todo su universo. No solamente en un sentido abstracto, sino también en un sentido muy directo e inmediato. El aspecto. La sensación. El colour. La estructura. El material. La composición.

Las alfombras suavemente vellosas hacen referencia a las crines ligeramente ensortijadas de algunas razas de caballos. Las alfombras de cuero han sido tejidas en piel de lomo, en un exclusivo lazo tejido.

Al igual que los faldones de sillas de montar de los indios, las carpetas tejidas tienen bordes de piel.



EQUUS 3 RPEQ03-1111
Flatwoven rug in fine buffalo Leather, Total weight 2400 g/m²
Service: 160x230cm, 200x290cm, 240x340cm



EQUUS 3
Roomshot

RPEQ03-1111



“ *Count on Planet wanting to go far away so great the oriental influences she brings ashore with ethnic and baroque mingled in its abundance of history, we think it's galore* ”

PLANET

A worldly flavoured collection balanced with oriental, ethnic and baroque influences.

Une collection mondiale parfumée avec les influences orientales, ethniques et baroques.

Una colección de gusto sofisticada equilibrada con influencias orientales, étnicas y barrocas.

SIMPLICITY

Simplicity is a good virtue. Simplicity makes you strong. Simplicity brings us all together in front of the crackling fire. Simplicity is evoked by means of the simple mix of natural fibre and rubber. The materials are turned and sometimes straight, nicely in line and sublimely captured in a web of ingenious weaving. Rugs to love.

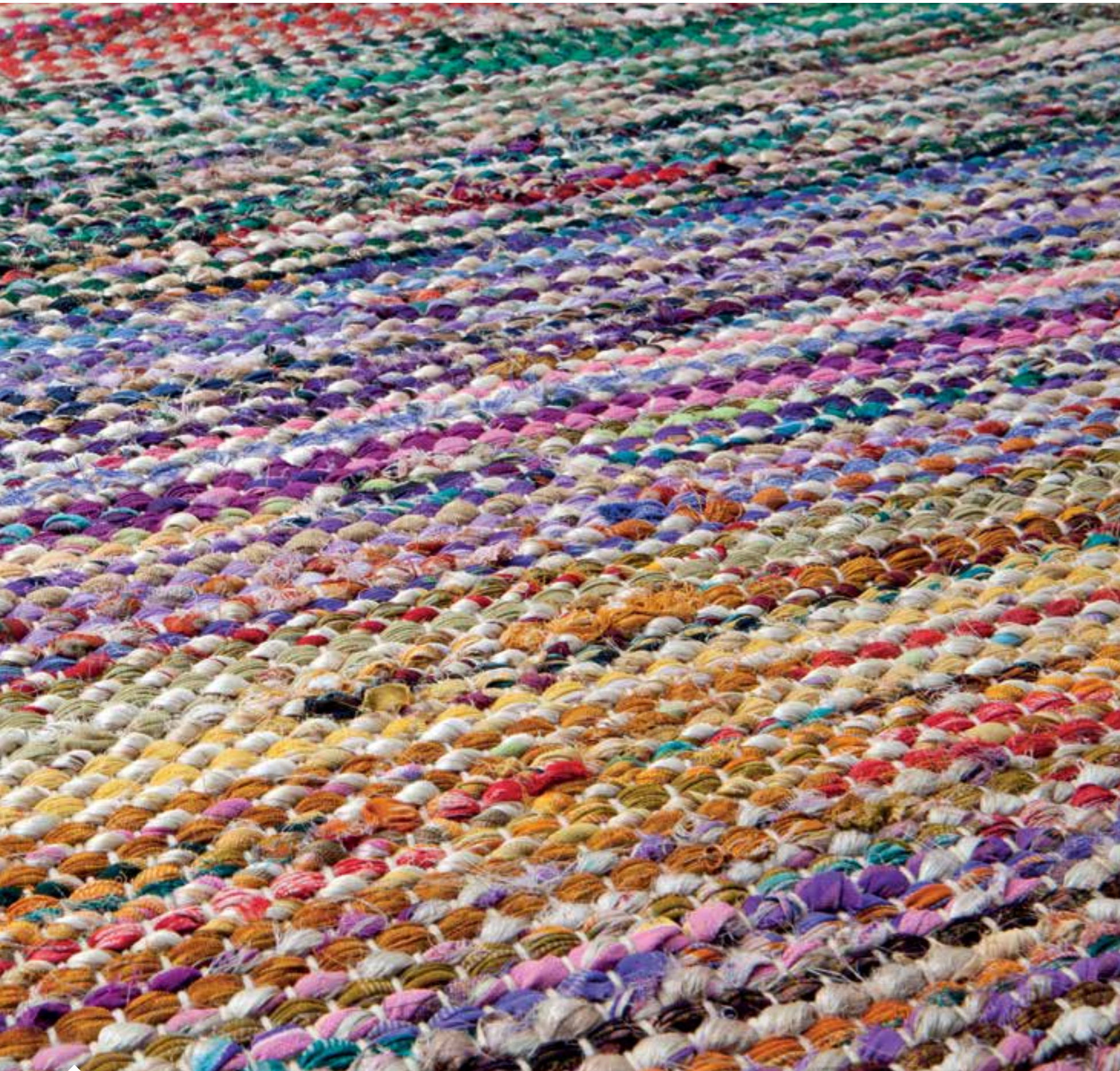
Beau dans toute sa simplicité. La simplicité fait la force. La simplicité nous rassemble tous autour d'un feu qui crépite. La simplicité est évoquée par le simple mélange des fibres naturelles et du caoutchouc. Les matériaux sont tournés ou droits, parfaitement raccordés et capturés sublimement dans une toile de tissage. Des tapis à adorer.

La simplicidad honra. La simplicidad refuerza. La simplicidad nos reúne a todos alrededor de una crepitante hoguera. La simplicidad rezuma de la simple mezcla de fibras naturales y caucho. Torcida y a veces recta, bellamente ajustada y sublimemente incorporada a una red de artístico tejido. Alfombras para amar.



RECYCLED
High content recycled materials used

PERU
RPER01 - 9999
Flatweave in a mix of rubber and recycled fibers, Total weight 2400 g/m²
Service: 160x230cm, 200x290cm



BRAZIL
Close-up

RPBRZ2-9999



BRAZIL

RPBRZ1-9999

Flatweave in a mix of Polyester & Natural Fibers, Total weight 1400 g/m²
Service: 160x230cm, 200x290cm



BRAZIL

RPBRZ2-9999

Flatweave in a mix of Polyester & Natural Fibers, Total weight 1600 g/m²
Service: 160x230cm, 200x290cm



RIO
Close-up

RPRI01-2020



RIO
100% Polyester Microfiber, Total weight 2300 g/m²
Service: 160x230cm

RPRI01-2020



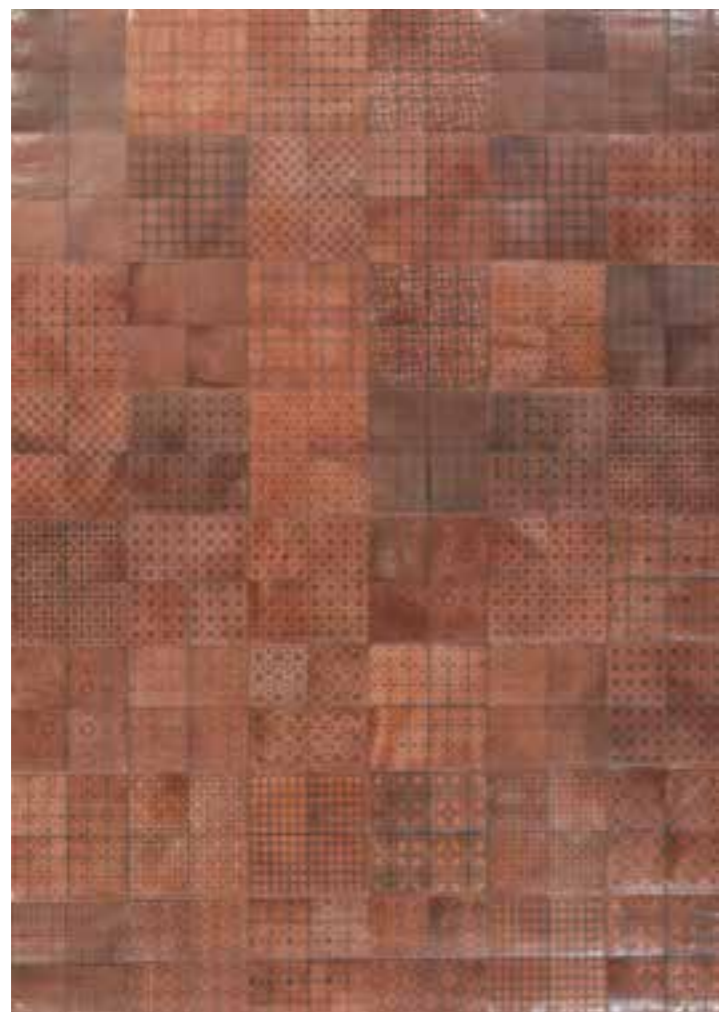
TIBET RPTBT2-7575
Kilim of Wool and Cotton in Multiple Weave, Total weight 1200 g/m²
Service: 160x230cm, 200x290cm



TIBET RPTBT3-1313
Kilim of Wool and Cotton in Multiple Weave, Total weight 1200 g/m²
Service: 160x230cm, 200x290cm



TIBET RPTBT4-9999
Kilim of Wool and Cotton in Multiple Weave, Total weight 1200 g/m²
Service: 160x230cm, 200x290cm



OLYMPUS RPOLY3-1111
Patchwork: 100% Leather Laser printed, Total weight 2250 g/m²
Service: 160x230cm, 200x290cm



OLYMPUS RPOLY2-8800
Patchwork: 100% Leather Laser burned, Total weight 2250 g/m²
Service: 160x230cm, 200x290cm, 240x340cm

EVERY PIECE IS UNIQUE!



ETNA RPETNA-3037
100% Polyester Tie Dyed Extra Soft, Total weight 2300 g/m²
Service: 160x230cm, 200x290cm, 240x340cm



ETNA RPETNA-6006
100% Polyester Tie Dyed Extra Soft, Total weight 2300 g/m²
Service: 160x230cm, 200x290cm, 240x340cm



NAMADA 1
Polypropylene Loop, Total weight 2000 g/m²
Service: 160x230cm, 200x290cm, 240x340cm

RPNAM1-3399



NAMADA 1
Polypropylene Loop, Total weight 2000 g/m²
Service: 160x230cm, 200x290cm, 240x340cm

RPNAM1-9999

ALPHABETIC SUMMARY

| | |
|--|--------------|
| Actio | 29-33 |
| Bamboo | 92-93 |
| Banana | 94-95 |
| Bellagio | 64-65 |
| Bogata | 106-107 |
| Bones | 14-15 |
| Boston | 36-37, 76-77 |
| Brazil | 114-115 |
| Costes | 70-71 |
| Crash | 12-13 |
| Cyclo (outdoor, also suitable for indoor use) | 84-87 |
| Denim Jeans | 22 |
| Diamond | 66-67 |
| Dolce | 48-51, 72-75 |
| Dunk | 39 |
| Elite | 68-69 |
| Equus 3 | 108-109 |
| Etna | 122-123 |
| Face | 26-27 |
| Fluo | 10-11 |
| Granite | 60-61 |
| Hannah | 42-43 |
| Havana | 90-91 |
| Ibiza | 34-35 |
| Jam Craft 7 | 104-105 |
| Laura | 46-47 |
| Lucca | 48-51, 72-75 |
| Mood | 28-29 |
| Namada (outdoor, also suitable for indoor use) | 124-125 |
| Niki | 44-45, 96 |
| Olympus | 120-121 |
| Paper 2 | 98-99 |
| Peace | 16-17 |
| Peru | 112-113 |
| Popcorn | 18-19 |
| Punk | 24-25 |
| Quote | 6-7 |
| Riga | 58-59 |
| Rio | 116-117 |
| Season | 96-97 |
| Silence | 54-57 |
| Soccer | 38-39 |
| Sonata | 78-79 |
| Style | 80-81 |
| Tibet | 118-119 |
| Tokyo | 8-9 |
| Wrinkle | 23 |
| Yoga (outdoor, also suitable for indoor use) | 83 |
| Zen (outdoor, also suitable for indoor use) | 82 |
| Zipper | 20-21 |



THANKS TO

Our dedicated team for their endless energy
 Our friends who opened their homes to provide the beautiful locations
 Photography: Stefanie Faveere
 Hair and make-up artist: Steven Raes
 Model: Hanne Desmet

COPYRIGHT
 © Papilio. All rights reserved. Reproduction of any parts of this catalogue without written consent is prohibited.

All Papilio designs, names, photos, text and others intellectual property used in this catalogue are the copyright of Prado Rugs N.V. trading as Papilio®
 Any infringement or abuse of our copyright may be pursued by law.
 Prado Rugs N.V. trading as Papilio® always reserve the right to make changes or additions to the descriptions or features given in this brochure in the light of technical developments or availability of materials.
 We are not responsible for variations in colour, weight or dimensions, as variations are possible whenever products are hand-made or when using natural materials.



www.papilio.be

Follow us   